



Onondaga
Central Schools

Reopening School Community Forum

August 13, 2020

Reopening School Community Forum

Agenda:

Dates and Times:

- August 13, 2020, at 6:00 pm
- August 17, 2020, at 12:00 pm
- August 20, 2020, at 6:00 pm

Presentations:

- Updates from the previous two presentations: 7/23 and 7/28
- Reinforcements
- The Community Forum will be recorded live and posted to our webpage.

At the end will be a Question and Answer time:

- Please type your question in the Chat box: If it's school building specific please designate the school to start your question.

Back to School Night and Orientation

- Virtually
- Individual Family by Appointment Only
- When: Between September 1-3 and 8th
 - Rockwell ES
 - Wheeler ES
 - Jr. & Sr. HS

School Reopening Notes from Onondaga DOH

Infection Rate: Since mid-July our County's infection rate has been under 1% of all those tested. This means for every 100 people tested, less than one person tests positive. Several factors that affect the infection rate are also in these low numbers including the reopening of the economy and the resumption of travel. Even with these factors in place, the infection rate has stayed very low.

Cases Among School-Aged Children: Since the beginning of the pandemic, approximately 175 of our 3,450 cases, or 5%, have been school-aged children. In fact, of those aged 5 through 9, there have only been 21 cases or 0.6% of all cases. No one in this age group has succumbed to COVID-19.

Contact Tracing: Contact tracing of all cases is the responsibility of Onondaga County. Experienced professionals from our County Health Department have already contact traced all of the 3,450 cases that have occurred in our county. They will continue to do so when schools open, working in coordination with our school administration and healthcare team.

School Reopening Notes from Onondaga DOH continued

Community Deaths: All of those who have died in hospitals in Onondaga County from COVID-19 have had underlying medical conditions. Additionally, all but one death were among residents 50 and over, with the vast majority being over 70 years of age.

Masking Works: Per the Governor's requirement for everyone to wear a mask, there is no doubt that face coverings prevent the spread of the virus. One would expect that healthcare workers would have a higher infection rate than the general-public because of their ongoing potential exposure to the virus. From data out of New York State, it was reported that 20% of the general-public had antibodies to COVID meaning they had the virus at some point, compared to just 12% of healthcare workers.

Testing: Testing has been successfully employed to root out the virus, isolate it, and then starve it. Working with the County we will have opportunities through mobile testing sites for staff and students to be tested before school begins.

Health and Safety

- Keep your child home when they are sick
- Unprecedented time, we must be vigilant about keeping our sick children home
- Especially if they exhibit any potential symptoms of Covid-19 such as:
 - Fever, Cough, Headache, Shortness of breath, Sore throat, Nausea, Vomiting,
 - Diarrhea, Muscle or Body Aches, Fatigue, Runny Nose, or New loss of Taste or Smell.

Please keep your child home from school until they are symptom free, **without medication**, for 24 hours.

It is important to **note**, recent clarifications from the Department of Health **REQUIRE** that if a child is sent home from school with any of the above symptoms (unless there is a pre-existing diagnosis to explain it, ex, asthma, migraines etc.), in order to return to school they must provide:

“At a minimum, documentation of evaluation by a health care provider (doctor’s note), a negative COVID-19 test, and symptom resolution, or if COVID-19 positive, release from isolation as required by the Department of Health and NYSED.”

Health Questionnaire

Please complete this health questionnaire EVERYDAY BEFORE COMING TO SCHOOL. We are looking at an APP for daily reporting, so changes are coming.

1. Have you had a temperature greater than 100.0 F in the last 24 hours?
2. Do you have a headache, cough, congestion, runny nose, shortness of breath, sore throat, fatigue, muscle or body aches?
3. Have you recently lost your sense of taste or smell?
4. Have you had vomiting or diarrhea in the last 24 hours?
5. Have you been near someone with a positive case of COVID-19 in the last 14 days?
6. Have you travelled to a location designated as travel restricted by NYS in the last 14 days?

If you have answered yes to any of the above questions, **YOU MUST NOT COME TO SCHOOL.** Please contact your primary health care provider for further health guidance and/or follow the CDC and New York State guidance for exposure and/or quarantine after travel.

Faculty and Staff will certify prior to arrival to school each day. Students must submit in writing or electronically once per week, Prek-6 on Mondays, 7-12 the first day of your cohorts attendance.

COVID-19 SCREENING

Screening:

- All faculty, staff and students must fill out a daily health questionnaire prior to arrival at school.
- Upon arrival at school all faculty, staff and students will have their temperature taken. This is **redundant as planned**- each student and staff should complete this at home prior to coming to school.
- Faculty and staff are required to certify that they have no temperature greater than 100.0 F and that all answers to the questionnaire are no.
- Parents/Guardian or Students are required to fill out the questionnaire daily at home, but must submit it once per week, Prek-6 on Mondays and 7-12 on the first day each cohort arrives. We are looking at an APP for Staff and Students, so changes are coming.
- Anyone with a temperature greater than 100.0 F, signs of illness or answers yes to any of the health questions will be isolated until they can be picked up from school to follow up with their health care provider.
- All visitors, guests and vendors must follow the same procedures as outlined above.

NYS Travel Advisory

Onondaga County Department of Health: Travel Advisory

In response to increased rates of COVID-19 transmission in certain states within the United States, and to protect New York's successful containment of COVID-19, the State has issued a travel advisory. Anyone who has traveled from within one of the designated states with significant community spread must complete this form and undertake a precautionary quarantine when entering New York for 14 days from the last day they were in a designated state. Learn more here:

<https://covid19.ongov.net/>

COVID-19 Testing

Performed by Onondaga County Department of Health

Prior to the opening of school: To mitigate risk of infection and to ensure that schools reopen safely, schools will offer voluntary testing opportunities in partnership with Onondaga County. This proactive testing will be available for all school staff at mobile testing sites throughout the County. These sites will be appointment based. In addition to staff, high school students will also be given the opportunity to be tested.

On-Going Testing: Once schools are open, there will be specific protocol in place for instances where positive cases have been identified. Each school will have a portal on their website that will allow for 24 hour testing for those who have been in school while symptomatic.

When a positive case has been identified, those who should be tested will be identified by the contact tracers of the Health Department and will be directed to schedule a test through the school's website portal.

COVID-19 Testing continued

Performed by Onondaga County Department of Health

Surveillance Testing:

- To further promote safety and prevent COVID-19 spread, it will be appropriate to perform random saliva-based surveillance testing during the school year. This method of surveillance testing is approved by the New York State Department of Health.
- Pools of approximately 12 staff and students will be tested using the saliva protocol. Should the pool show the presence of COVID-19 everyone in the pool will need to have a diagnostic test performed.

COVID-19 Contact Tracing

Performed by Onondaga County Department of Health

Quarantine Process:

- Those directed to quarantine will be monitored by contact tracers for signs and symptoms of COVID-19
- Contacts who develop symptoms become a Person Under Investigation (PUI) and are referred for testing and further investigation
 - Positive tests reported to OCHD and process begins again
- Release from quarantine can only be granted by OCHD.

Guidance from Health Department on school closure related to positive cases

- School closure depends on the rate of infection in the community
- Closure will occur with the consultation and guidance of OCHD and can vary depending on the situation: § One such example is if there are two separate, and seemingly unrelated, cases in two different classrooms of the same building

COVID-19 Contact Tracing

Performed by Onondaga County Department of Health

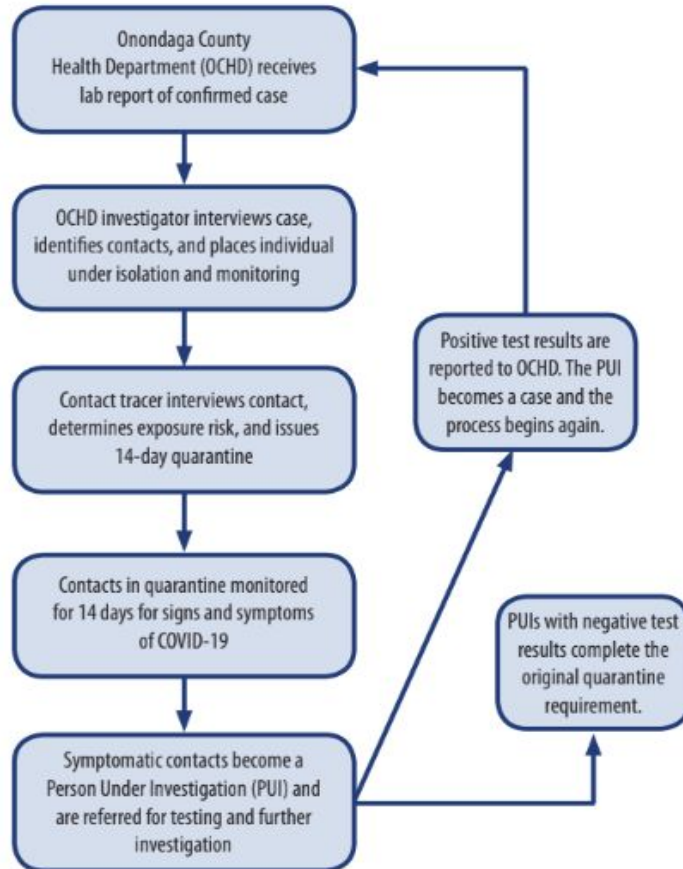
Once a lab confirmed case has been reported to the Onondaga County Health Department (OCHD):

- A staff person (case investigator) from OCHD will contact the confirmed case and their parent/guardian in the case of a student.
- The confirmed case is interviewed and contacts identified.
- School personnel assist health department in identifying specifics pertaining to the exposure.
- The confirmed case is out in isolation for 10 days.
- Release from isolation can only be granted by OCHD.

Contact Tracer will interview all contacts:

- All contacts of confirmed case are interviewed to determine exposure risk.
- 14-day quarantine is issued by contact tracer for all close contacts of confirmed case.

ONONDAGA COUNTY HEALTH DEPARTMENT/SCHOOLS COVID-19 Student Contact Monitoring Process



Healthy Education

Let's Stay Safe:

- . OCS, Onondaga and NYS DOH, and CDC web pages have videos, flyers, and slides in multiple languages to educate you and your family
- . Have your child/children practice wearing their masks at home. MASK TRAINING

Use of Cloth Face Coverings to Help Slow the Spread of COVID-19

How to Wear Cloth Face Coverings

Cloth face coverings should—

- fit snugly but comfortably against the side of the face
- be secured with ties or ear loops
- include multiple layers of fabric
- allow for breathing without restriction
- be able to be laundered and machine dried without damage or change to shape

CDC on Homemade Cloth Face Coverings

CDC recommends wearing cloth face coverings in public settings where other social distancing measures are difficult to maintain (e.g., grocery stores and pharmacies), **especially** in areas of significant community-based transmission.

CDC also advises the use of simple cloth face coverings to slow the spread of the virus and help people who may have the virus and do not know it from transmitting it to others. Cloth face coverings fashioned from household items or made at home from common materials at low cost can be used as an additional, voluntary public health measure.

Cloth face coverings should not be placed on young children under age 2, anyone who has trouble breathing, or is unconscious, incapacitated or otherwise unable to remove the cloth face covering without assistance.

The cloth face coverings recommended are not surgical masks or N-95 respirators. Those are critical supplies that must continue to be reserved for healthcare workers and other medical first responders, as recommended by current CDC guidance.

Should cloth face coverings be washed or otherwise cleaned regularly? How regularly?

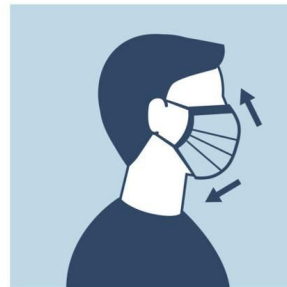
Yes. They should be routinely washed depending on the frequency of use.

How does one safely sterilize/clean a cloth face covering?

A washing machine should suffice in properly washing a cloth face covering.

How does one safely remove a used cloth face covering?

Individuals should be careful not to touch their eyes, nose, and mouth when removing their cloth face covering and wash hands immediately after removing.



Daily and Nightly Cleaning/Disinfecting

- Rooms cleaned and disinfected daily and nightly
- High Touch area cleaned after each use such as Computers, Laptops and Chromebooks.
- Jr. & Sr HS- desks between classes
- Buses
- Bathrooms
- Equipment
- Library Books quarantined for 72 hours after returned

Typical District Classroom

Classroom Social Distancing Sample



In-Person and Hybrid Learning

- Google Classroom (for all models of instruction)
- Grades PreK-6 Daily In-person
- Grades 7-12 Hybrid two days in person and three days distance learning
- PreK-6 mix of paper packets and online learning activity
- Daily live streaming, facetime, and videos with teachers instructing with large groups, individual and small group work
- Attendance taken daily and by period at Jr/Sr HS
- Packet delivery, pickup and drop off.

Distance Learning

- Open Enrollment
- Limited Return:
 - January 29, 2021, end of the first semester
- Google Classroom (for all models of instruction)
- PreK-6 mix of paper packets and online learning activity
- Daily live face time with teachers instructing and individual and small group work
- Attendance taken daily and by period at Jr/Sr HS
- Packet delivery, pickup and drop off

Transportation

Looking forward to a September start in a traditional way:

- There will be a morning and afternoon bus run every school day for Rockwell and Wheeler.
- There will be a bus run every morning and afternoon for the high school following their Hybrid Schedule.
- Students attending schools that are outside of our district will be transported according to their school schedule.



Transportation

Looking forward to September in a new way:

- Bus runs will be established for a maximum of **24 students, 1 student per seat** unless same family then can have two in the seat.
- Masks are required to be worn by every student and every staff member while on the bus whether moving or stopped.
- Windows and roof hatches will remain open with temperatures above 45 degrees. Windows can be adjusted due to temperature but need to always be slightly open with temperatures above 45 degrees.
- High touch areas will be sanitized after every run and the entire bus once daily.

Transportation

THANK YOU

Thank you in advance for your patience and understanding. We appreciate everyone's help, from utilizing safety precautions; to parents volunteering to transport their own children. We know it will be different, as we all adjust and thank you again.



Food Service

- Food will be available to all students.
- Parents will pre-order remotely using [Onondaga CSD's Nutrislice website or App](#)
 - Parents can order meals daily or weekly
 - A cancellation feature will be offered
 - Will eliminate student lines
 - Directions to assist with Nutrislice can be found on the [district's food service webpage](#).
- Initially, meals will be pre-packaged for students attending school.
- Distance learners will need to complete a food service survey for food delivery.
- As of today, Emergency Meal Provisions have elapsed. Therefore, students will be charged their regular eligible price for any meal ordered.
- Free and Reduced Lunch Applications can be found on the [district's food service webpage](#).



OCS Special Education

- Student's I.E.P's and 504 Plans will be followed to the greatest extent possible.
- Services will be provided in the same mode and/or manner as is possible with regards to the type of instructional model - in person and remote learning.

Rockwell ES

In Person Learning

- Students will return to school 5 days a week in person
- Class sizes range 12-14 students per classroom
- Students will wear masks and be socially distanced
 - Mask breaks will be coordinated by the teacher
- In Person students will follow a regular school day schedule
- Students will eat breakfast and lunch in the cafeteria
- Students will go to recess, wearing a mask in three separate locations
- Back to school mailing will tentatively go out August 20th with teacher assignments, drop off and pick up procedures, free and reduced lunch application and transportation information

Rockwell ES

Virtual Learning

- Virtual Instruction will take place through Google Classroom and work packets
- Virtual students will have a similar schedule in each grade level to accommodate siblings and families. (Lunch and recess)
- Chromebooks will be available to students for virtual learning if there is a need
- If families decide to have their child(ren) attend virtually, parents should contact Mrs. Hart

Wheeler Elementary In Person Learning

- Students will return to school 5 days a week in person
- Class sizes range 12-16 students per classroom
- Students will wear masks and be socially distanced
- In Person students will follow a regular school day schedule
- Students will be able to get a “grab-and-go” breakfast to eat in the classroom
- Lunch will be in the cafeteria
- Students will go to recess, wearing a mask in five possible locations

Wheeler ES

Virtual Learning

- Virtual Instruction will take place through Google Classroom and work packets
- Virtual students will have a similar schedule in each grade level to accommodate siblings and families. (Lunch and recess)
- Chromebooks will be available to students for virtual learning if there is a need
- If families decide to have their child(ren) attend virtually, parents should contact Mr. Smith

Jr/Sr High School Arrival

- Students will complete a health screening check before entering the building. Students and staff will have temperature checks before they can enter the building.
- We will have staff members at the bus entrance taking temps and staff members at the main office entrance taking temps for walkers (see below).
- Students that do not pass the health screening will be quarantined in the main office until they can be picked up or transported home.
- Students that are riding the bus will enter the cafeteria doors only. At this time they will receive the health screening.
- Students that drive, walk or are dropped off must enter through the main office doors. At this time they will receive the health screening

Jr/Sr High School Schedule

Cohort/Group #1

- Students with last names A-L
- Tuesday (A-Day) and Wednesday (B-Day) will be in person
- Virtual learning will be Monday, Thursday and Friday
- Follow their daily schedule

Cohort/Group #2

- Students with last names M-Z
- Thursday (A-Day) and Friday (B-Day) will be in person
- Virtual learning will be Monday, Tuesday and Wednesday
- Follow their daily schedule

Distance Learner/Group #3

- Registered students who selected distance learning will be virtual Monday-Friday
- Distance learners will follow their daily schedule

Jr/Sr High School Schedule

[Jr./Sr. High School Sample Schedule](#)

[Hybrid Flyer](#)

Onondaga Jr/Sr High School

Cohort Division Rationale:

- In order to maintain social distancing in each classroom and period we divided alphabetically.
- In order to ensure appropriate social distancing measures we split the students by last name (A-L).
- A-L and M-Z provides teachers ability to provide instruction with minimal disruption.

Onondaga Jr/Sr High School

Cohort Division Rationale Continued:

- We determined cohort days by following alpha order. Students with the last name A-L will attend on Tuesday and Wednesday and students M-Z will attend on Thursday and Friday.
- Monday was chosen as a virtual day due to the number of holidays that fall on Mondays. We want to maximize the amount of time students will receive in person instruction.
- On Mondays (virtually), teachers will share the week's agenda and learning objectives.

Onondaga Jr/Sr High School

Moving Cohorts

- At this time we do not have the ability to move students unless they have a family member living in the same household or to meet an Individualized Education Plan (IEP).
- We will be revisiting this once we start the 2020-2021 school year.

Onondaga Jr/Sr High School

- Classroom teachers and staff will monitor classrooms and hallways during arrival and departure to ensure students are following appropriate reopening protocols.
- Students who do not eat breakfast will be sent directly to their first period class.
- Daily attendance will be taken starting at 7:45 am. Additionally, period by period attendance will be taken as well.
- Teachers will plan time into their day to allow for mask breaks, which may include taking the students out of the classroom to other areas of the campus; preferably outdoors. These details are still being worked out.

Onondaga Jr/Sr High School

- Classroom teachers will monitor students to ensure that all of the students are following appropriate procedures for PPE and social distancing. Students who do not follow the appropriate procedures will be reported immediately to the main office and students will be removed from the classroom.
- State Health Department Social Distancing requirements for Physical Education, Chorus, and Band require students and staff to be 12 feet apart.
- Students will not be changing for Physical Education, additionally, all lockers including Physical Education lockers will not be utilized.

Onondaga Jr/Sr High School

- During lunch, students will eat in the cafeteria and will remain seated. Masks will be worn when not eating. Students will be served lunches one at a time and be directed immediately to their seats.
- Bathroom breaks will be allowed for one student at a time and only one person will be allowed in the bathroom at a time.
- Students in study hall will have to remain in their classrooms and will not be allowed into the library or any other class unless prior approval from administration is given.
- Classes will be dismissed by the bell. Staff will remain in the classrooms to disinfect between class periods. Other staff will also be assisting in supervision of the hallways.
- All students will be dismissed at 2:25 pm.

When to Switch to 100% Distance Learning

- **When we cannot cover classrooms because teachers are out sick.**
 - We need substitute teachers; the application is available on our website.
- **When we do not have enough bus drivers to transport students.**
 - We need substitute bus drivers and bus monitor; the application is available on our website.
- **Guidance from Health Department on school closure related to positive cases**
 - School closure depends on the rate of infection in the community
 - Closure will occur with the consultation and guidance of OCHD and can vary depending on the situation:
 - One such example is if there are two separate, and seemingly unrelated, cases in two different classrooms of the same building

Questions

Please type your question in the Zoom Chat Box: If it's school building specific please designate the school building to start your question.

We will do our best to answer all your questions given the information we have to date.

We will have two more Community Forums

August 17, 2020, at 12:00 pm

August 20, 2020, at 6:00 pm

THANK YOU FOR YOUR SUPPORT, TRUST AND PATIENCE